

INSTRUCTIONS FOR USE

AbbVie Combined Fitted Vest

For use with VYAFUSER™ Pump.

This guide pertains only to the use of the AbbVie Combined Vest. For questions or problems, refer to these Instructions for Use or call support toll free at 1-866-489-2538.



About your Combined Fitted Vest:

The Combined Fitted Vest carrying accessory is designed to carry the VYAFUSER Pump. The Combined Vest carrying accessory is intended for single-patient use only. The Combined Fitted Vest carrying accessory is indicated for use by patients with advanced Parkinson's disease.

The Combined Fitted Vest is intended to be an undergarment layer that holds the pump close to the

Precautions, Care, and Disposal Information

Precautions:

- ⚠ CAUTION:** When putting on the Combined Fitted Vest, ensure the pump is resting on a flat surface, and will not fall (see Figure i). **If the pump is not completely secure, it may fall and injure you or damage the pump.**

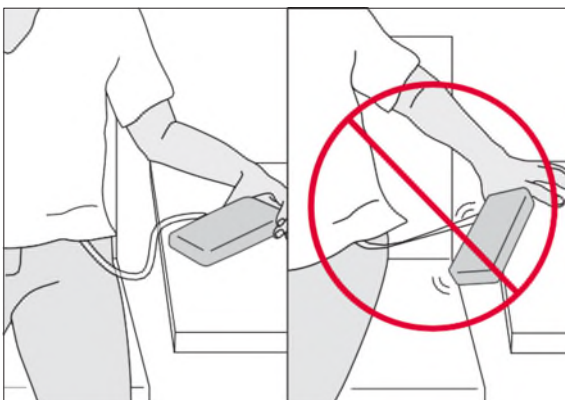


Figure i

- ⚠ CAUTION:** In the event the pump is damaged following a drop, contact your healthcare provider.
- ⚠ CAUTION:** The bottom of the adaptive zipper contains magnets. If you have any concerns, speak with your healthcare provider.

Caring for your AbbVie Combined Fitted Vest:

Materials: 90% polyester, 10% spandex

Care: Machine wash separately in cold water, hand wash, or dry clean. Lay flat to dry.

Disposing of your AbbVie Combined Fitted Vest:

Dispose of the device according to your local governing ordinances and recycling plans or contact AbbVie for help with disposal. Each device is for single-patient use only and cannot be re-sold or used on multiple patients.

To use your Combined Fitted Vest

Choose instructions for your pump:

VYAFUSER Pump

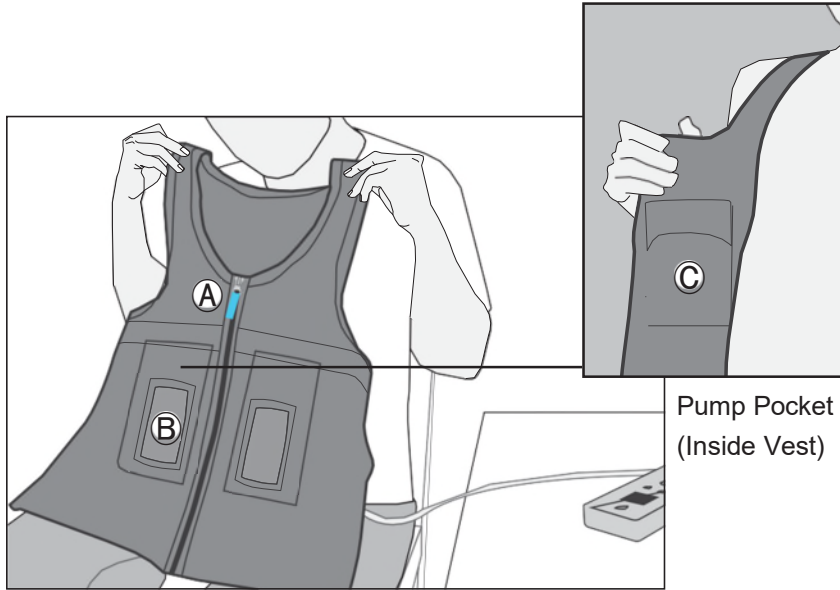


Front Pocket	2
Back Pocket	8

To take off your Combined Fitted	13
---	-----------

VYAFUSER Pump: Front Pocket

- 1) Get familiar with the front of the Combined Fitted Vest.



Front View of Combined Fitted Vest

- Ⓐ Zipper Pull
- Ⓑ Pocket Window
- Ⓒ Pump Pocket

VYAFUSER Pump: Front Pocket

- ⚠ **CAUTION:** Make sure that the pump is stable on a flat surface and will not fall while you put on the Combined Fitted Vest.
 - ⚠ **CAUTION:** If you stand up to put on the vest, be sure the pump is secure so that it does not fall and injure you or cause damage to the pump.
- 2) Put on the Combined Fitted Vest without the pump as you would a zippered jacket, leaving it unzipped (see Figure



Figure A

- 3) Confirm that the Combined Fitted Vest is correctly oriented with the openings of the Pump Pockets on the inside of the Combined Fitted Vest (see Figure B).

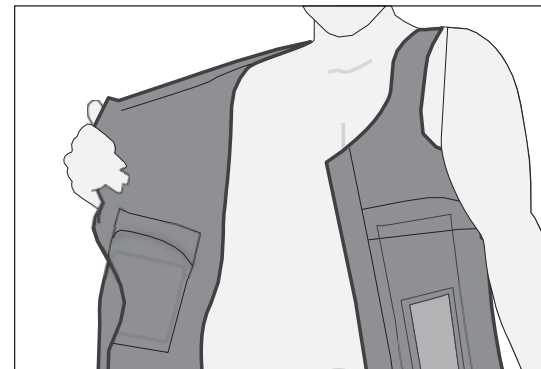
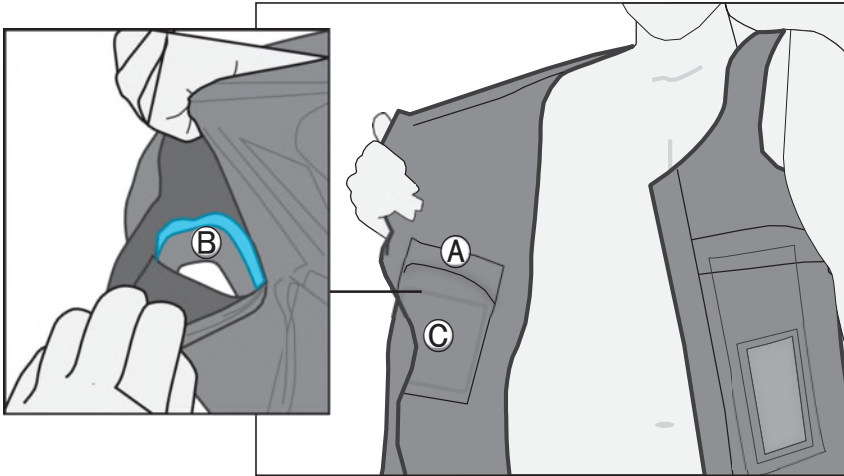


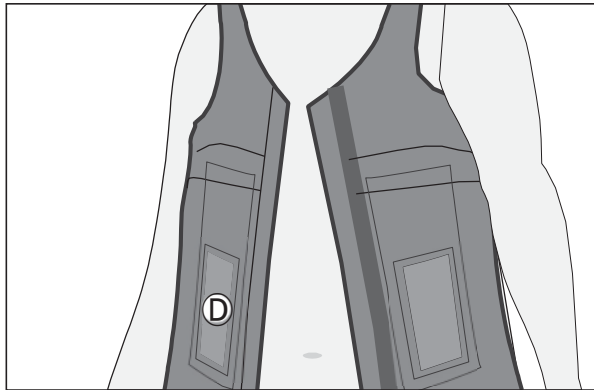
Figure B

VYAFUSER Pump: Front Pocket

- 4) Get to know the front pockets of the Combined Fitted Vest.



Inside of Combined Fitted Vest



Outside of Combined Fitted Vest

- Ⓐ Pocket Flap
- Ⓑ Pump Strap
- Ⓒ Pump Pocket
- Ⓓ Pocket Window

VYAFUSER Pump: Front Pocket

- 5) Prepare to insert the pump (see Figure C):
- Open the Pocket Flap of the Pump Pocket and find the blue strip. This is the Pump Strap.
 - With your palm facing your body, slide your hand between the Pump Strap and the Pocket Window. Push your hand away from your body to stretch the vest.
 - Leave your hand here to help guide the pump inside.

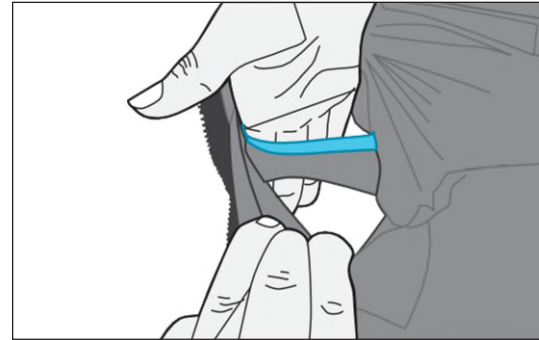
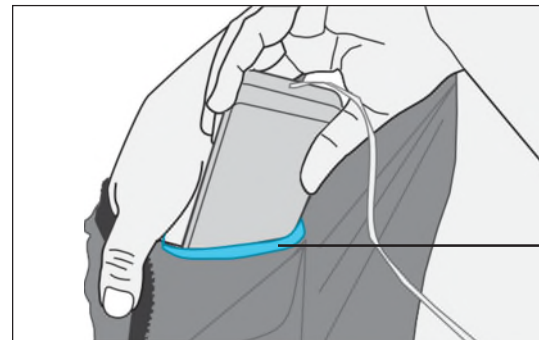


Figure C

- 6) Position the pump with the display and buttons facing away from you. Use the hand inside the pocket to help guide the pump between the Pump Strap and the Pocket Window (Figure D).



Blue strip should be visible.

Figure D

VYAFUSER Pump: Front Pocket

- 7) Make sure that the tubing exits the Pump Pocket and is not bent or twisted. The tubing should be fully inside the vest while starting the zipper (see Figure E).

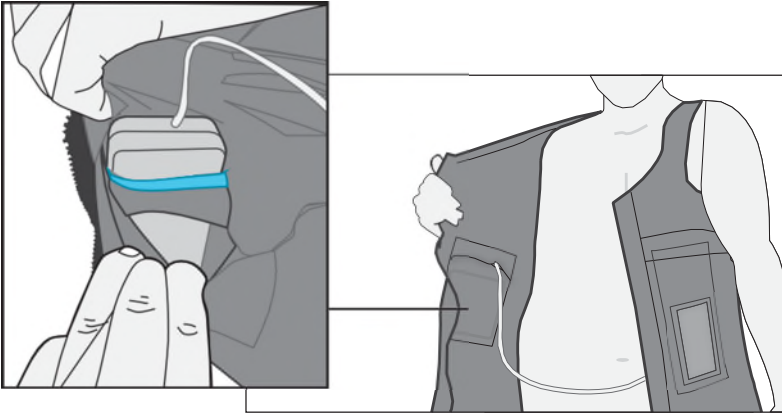


Figure E

- 8) Confirm that both the display and the buttons are visible through the Pocket Window (see Figure F).



Figure F

VYAFUSER Pump: Front Pocket

- 9) Hold the zipper ends near each other and allow the magnet to align the zipper (see Figure G).

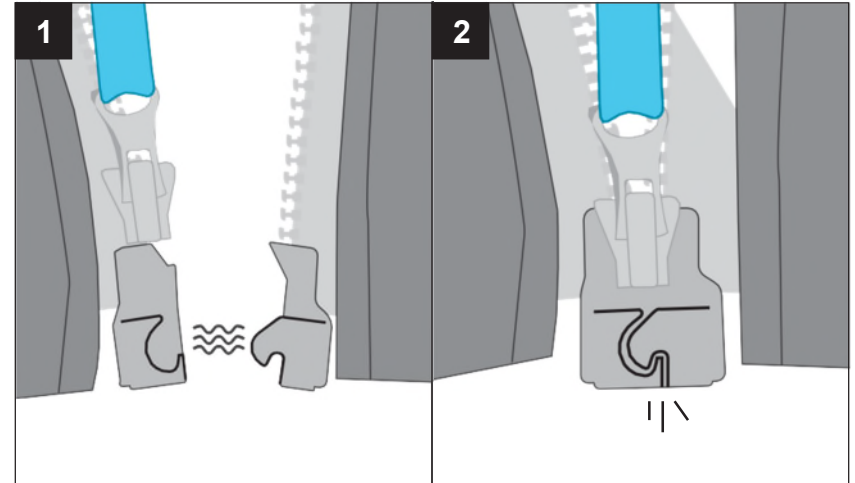


Figure G

- 10) Fully zip up the Combined Fitted Vest (see Figure H).

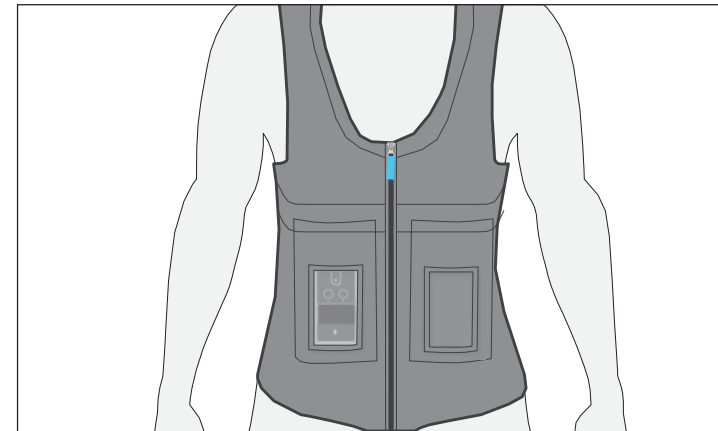
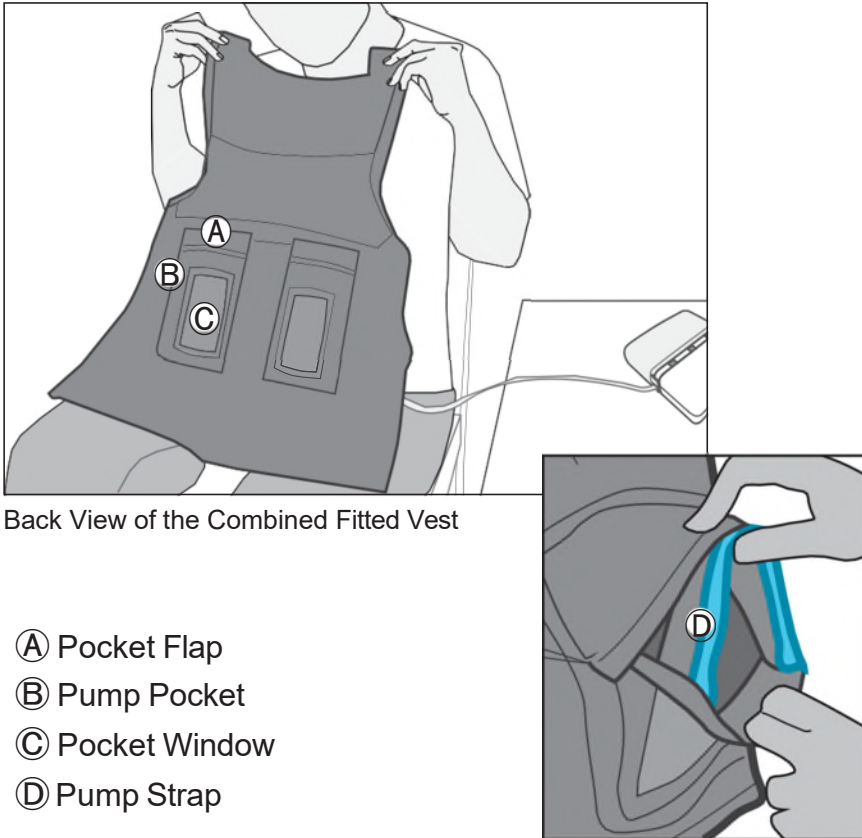


Figure H

To take off the Combined Fitted Vest, see page 13.

VYAFUSER Pump: Back Pocket

- 1) Before you begin:
 - Confirm there is enough tubing to comfortably reach from the infusion site to the back of your body.
 - Confirm VYAFUSER pump height above the infusion site is within specification (refer to VYAFUSER IFU).
 - Find a helper to stand behind you.
- 2) Have your helper get familiar with the back of the Combined Fitted Vest.



Back View of the Combined Fitted Vest

- Ⓐ Pocket Flap
- Ⓑ Pump Pocket
- Ⓒ Pocket Window
- Ⓓ Pump Strap

View into Pump Pocket

VYAFUSER Pump: Back Pocket

- ⚠ **CAUTION:** Make sure that the pump is stable on a flat surface and will not fall while you put on the Combined Fitted Vest.
 - ⚠ **CAUTION:** If you stand up to put on the vest, be sure the pump is secure so that it does not fall and injure you or cause
- 3) Put on the Combined Fitted Vest without the pump as you would a zippered jacket, leaving it unzipped (see Figure I).



Figure I

- 4) Ask your helper to confirm that the vest is correctly oriented with the openings of the Pump Pockets on the outside behind you (see Figure J).

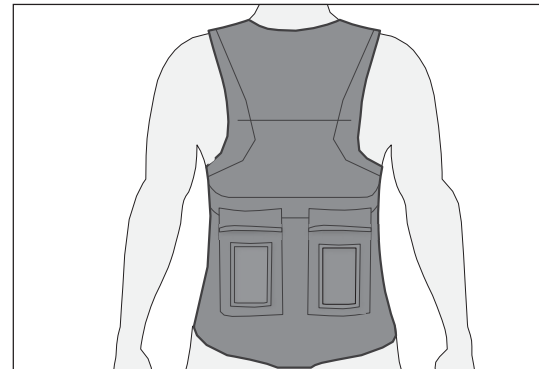


Figure J

VYAFUSER Pump: Back Pocket

- 5) Ask your helper to find the Pump Strap with the blue strip. Your helper should pull up the Top Flap and the Pump Strap together (Figure K).

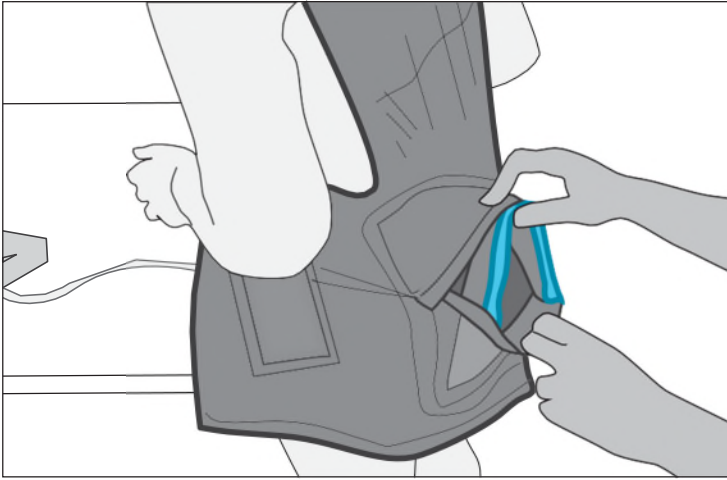


Figure K

- 6) Ask your helper to lift up the Pump Strap and Pocket Flap as shown (see Figure L).

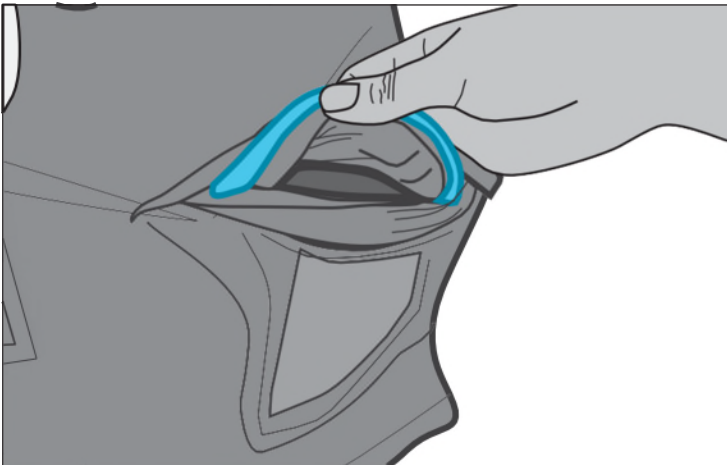


Figure L

VYAFUSER Pump: Back Pocket

- 7) Pass the pump through the inside armhole, then under your arm to your helper (Figure M).

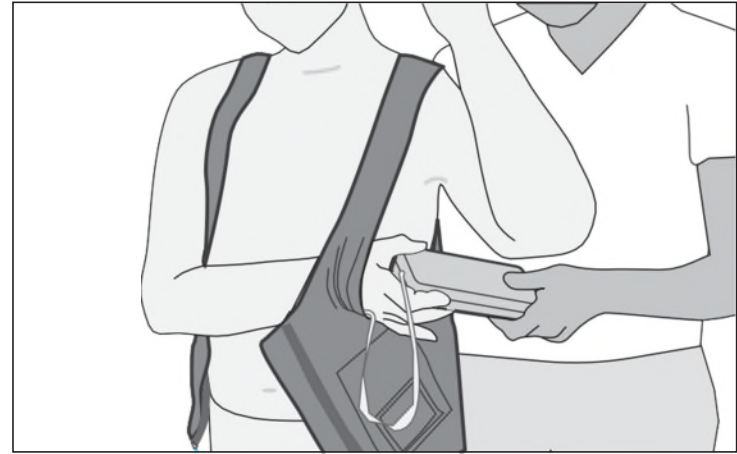


Figure M

- 8) Your helper should place the pump between the Pump Strap and the Pocket Window, with the display and buttons facing out (see Figure N).

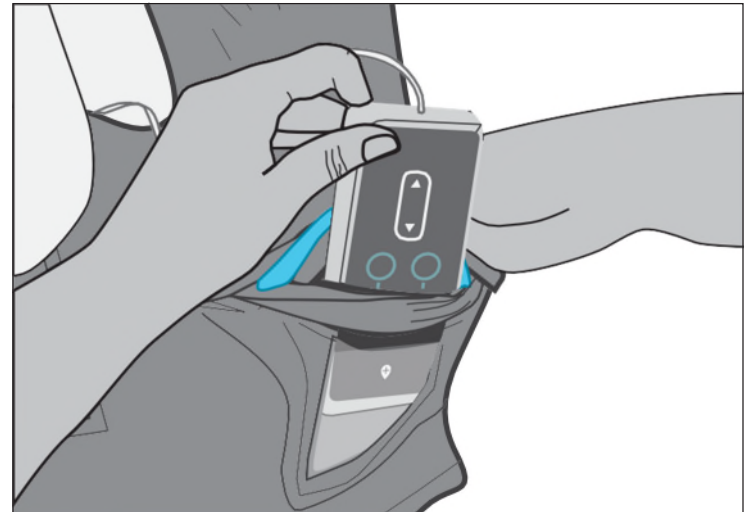


Figure N

VYAFUSER Pump: Back Pocket

9) Ask your helper to confirm:

- The pump display and buttons are not blocked by the Pump Strap (see Figure O).
- Both the display and the buttons are visible through the Pocket Window (see Figure P).
- Tubing exits the armhole and Pump Pocket and is not bent or twisted (see Figure P).

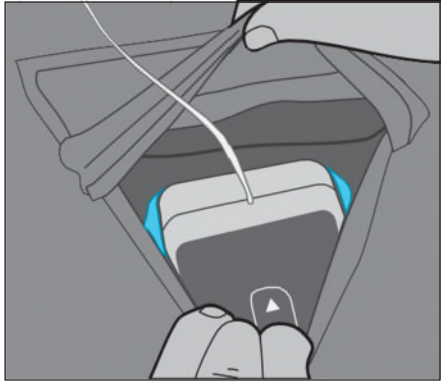


Figure O

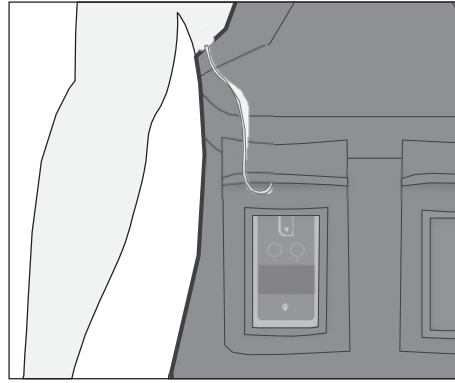


Figure P

10) Hold the zipper ends near each other and allow the magnet to align the zipper (see Figure Q).

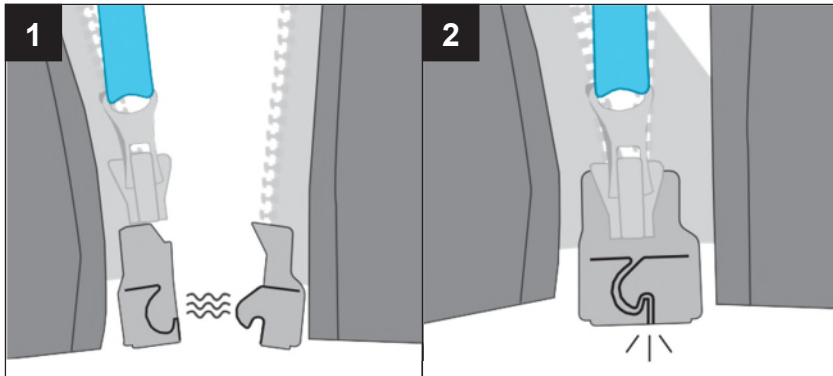


Figure Q

VYAFUSER Pump: Back Pocket

11) Fully zip up the Combined Fitted Vest. Confirm tubing is secured inside the vest (see Figure R).

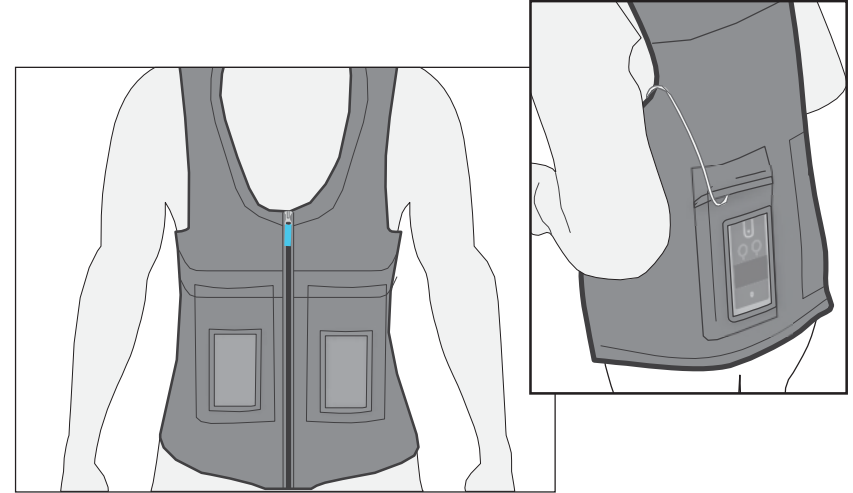


Figure R

To take off your Combined Fitted Vest:

- 1) Unzip the Zipper Pull on the front of the Combined Vest.
- 2) Remove the pump from the Pump Pocket.
- 3) Place the pump on a flat surface.
- ⚠ CAUTION:** Make sure that the pump is stable on a flat surface and will not fall while you take off the Combined Vest.
- 4) Take off the Combined Fitted Vest as you would a jacket.

Explanation of Symbols (per ISO 15223-1):



Catalog number



Batch code



Manufacturer



Medical Device



Use-by date



Caution



MR unsafe



AV325-004-001, AV325-004-002, AV325-004-003,
AV325-004-004, AV325-004-005, AV325-004-006,
AV325-004-007, AV325-004-008, AV325-004-009



Manufactured for:
AbbVie Inc.
1 North Waukegan Road
North Chicago, IL 60064 USA



rxabbvie.com

rxabbvie.com

©2022 AbbVie. All rights reserved.

0000021

August, 2022